

DS1404

# PC Programmable Soundmasking Level Controller

tech spec \_ sheet

The industry's largest supplier of design-build soundmasking solutions



## FEATURES

- Regulates Soundmasking, Paging or Music levels based on Date and Time
- PC Programmable seven-day schedules with Date and Holiday functions
- Four Independent, fully configurable channels
- Front Panel Controls for minor adjustments
- Easy to Read LCD displays Date/Time and Attenuation Levels for each Channel
- Standard Rack Mount – 1 rack space
- Battery back-up for Time/Date and User defined schedules during power outages
- Convenient installation using rear-panel mounted Phoenix® Connectors
- Designed for maintenance free year-round operation.
- Configurable Daylight Saving Time functions.
- Soft-start on power up feature
- One-Time “transition” ramp up for gradually introducing soundmasking into existing spaces

## DESCRIPTION

The DS1404 is a four channel, PC programmable, line-level attenuator used primarily to control soundmasking levels based on date and time-of-day. The DS1404 can also be used to provide attenuation schedules for background music or paging signals. Highly configurable custom schedules can be created and downloaded to the DS1404 using the provided Windows based software.

The front of the unit provides buttons used for minor changes, such as adjusting the time of day. The front panel buttons are also used to toggle the display between channels 1-2 and 3-4. The rear panel provides line level input and output connections via industry standard Phoenix™ connectors, a communication port for PC connections and bypass controls.

▶ soundmasking.com

6439 Atlantic Blvd\_Norcross, GA 30071\_(770) 242-8176\_(800) 989-6275

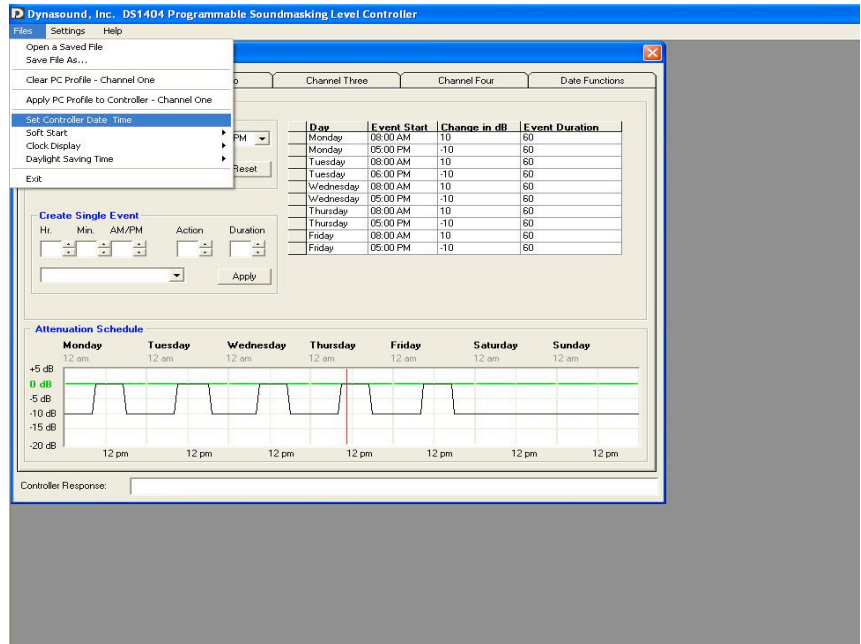
by **DYNASOUND**

Copyright© 2005. All rights reserved. This document may not be reproduced or transmitted in whole or part without permission of Dynasound, Inc.

## DYNASOUND'S WINDOWS BASED DS1404 CONTROL SOFTWARE

The DS1404 comes preconfigured for a standard Mon-Fri work schedule and may be used without need to customize the schedule.

Dynasound's Windows® based software can be used to program the DS1404 soundmasking controller to accommodate nearly any schedule.



## SPECIFICATIONS

### External Clock Controls

Push Button controls to set time/display options

### Frequency Response

Flat from 20Hz~20kHz

### THD+Noise

< 0.02% (20Hz~20kHz)

### Inputs

Four inputs, each 50k Ohms for "Line" Level

### Outputs

Four outputs, each < 600 Ohms

### Power Consumption

120VAC, 14 watts

### Dimensions

1-3/4" (1 RU) high,  
19" (standard rack mount) wide,  
7-1/2" deep

## ORDERING INFORMATION

DS1404 Soundmasking Level Control

Shipping Weight: 7 lbs

 soundmasking.com

6439 Atlantic Blvd\_Norcross, GA 30071\_(770) 242-8176\_(800) 989-6275

Copyright© 2005. All rights reserved. This document may not be reproduced or transmitted in whole or part without permission of Dynasound, Inc.